

**smico**

*Vibratory Screening Equipment*

# **DF MAX** Batch Scalper

**Dust Controlled Batch Scalping Station**  
3x4 and 3x6 Models Available

**smico**

MADE IN USA

- High volume scalp - up to 20,000 lbs/hr
- Dust containment and reclamation
- Maximum operator protection - ergonomic design & inhalation safety
- Self cleansing dust filter cartridges
- Dual side door access to filter chamber/cartridge removal
- Low profile horizontal vibrating screen
- Discharge outlet location options
- Sanitary or industrial finish

## **Max out your batch scalping!**

The **DF MAX** Batch Scalper provides one of the highest production rates of any dust collection bag dump station on the market.

**You be the judge!**

### **SMICO DF MAX**

#### **Screen surface area**

3x4 has 10.5 sq. ft.

3x6 has 16 sq. ft.

**vs.**

### **Competitor's Circular Dump-In Screener**

#### **Screen surface area**

24" has 2.4 sq. ft.

30" has 4.0 sq. ft.

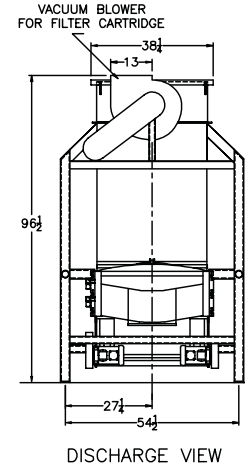
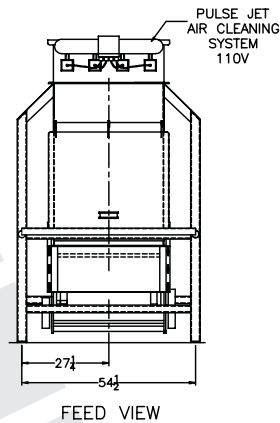
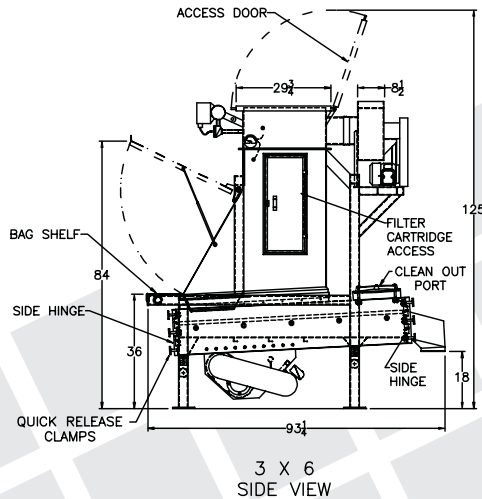
40" has 7.2 sq. ft.



**SMICO Manufacturing Company, LLC**



Jamieson Equipment Company  
www.jamiesonequipment.com  
toll free 800.875.0280



### DF MAX FEATURES

#### GENERAL

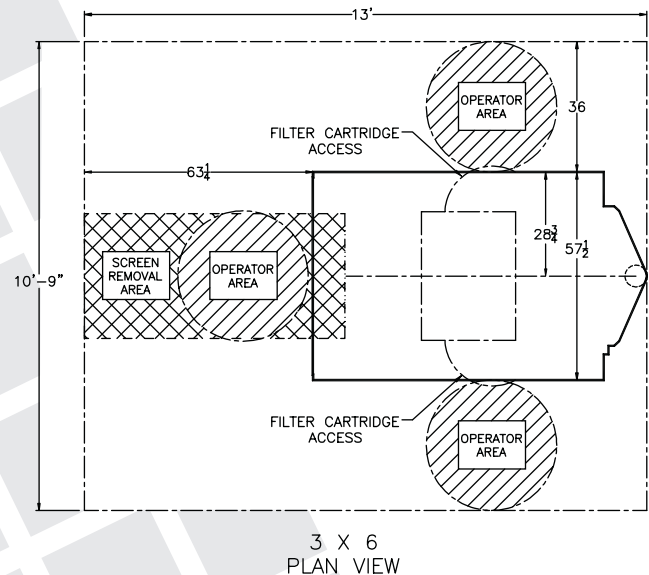
- Ergonomic design for ease of operation and operator safety
- Minimal plant floor operating space required
- Hinged product zone cleanout panels with quick-release clamps
- Easy-access filter cartridge chamber
- Operating weight: 3600 lbs.
- Low discharge port allows for easy connections
- Industrial, 3A dairy, FDA, and other sanitary standard finishes available
- OPTIONS
  - Hydraulic drum or tote lift includes clean seal discharge spout and material receiving hopper for dust controlled transfer

#### DUST COLLECTOR

- Maximum dust collection and reclamation
- Pulsing jet-air cleansing system with adjustable timer
- Air/Filter resistance gauge
- High-efficiency filter cartridges
- Integrated 2HP 3000 CFM vacuum blower fan
- Dual side door access to filter cartridge chamber
- Overhead access door to pulsing jet-air cleansing system
- OPTIONS
  - Bag filter dust collection system

#### VIBRATORY SCREEN

- Low profile horizontal vibrating screen
- Two high-efficiency 1/2 HP motors - 1293 RPM
- Drive: 3/16 stroke, inertially coupled linear drive
- Screen cloth: #10 mesh stainless steel FDA/USDA epoxy bonded to pre-tension deck
- Removable stainless steel safety grate
- Hinged product zone cleanout panels with quick-release clamps
- Inspection/clean out port
- OPTIONS
  - Standard magnetic grate
  - Rare earth magnetic grate
  - Oval discharge spout
  - Discharge outlet location
  - Various screen wire cloth types and mesh sizes



#### ELECTRICAL REQUIREMENTS

- Vibratory screen motors 230/460V, 3/60Hz
- Pulsing jet-air system 110V, 60Hz
- Vacuum blower fan 230/460V, 3/60Hz

